

State of Wyoming Corner Record

(In compliance with the *CORNER PERPETUATION AND FILING ACT*, Wyoming Statutes, 1997, Section 33-29-140 et. seq., and the Rules and Regulations of the Board of Registration for Professional Engineers and Professional Land Surveyors)

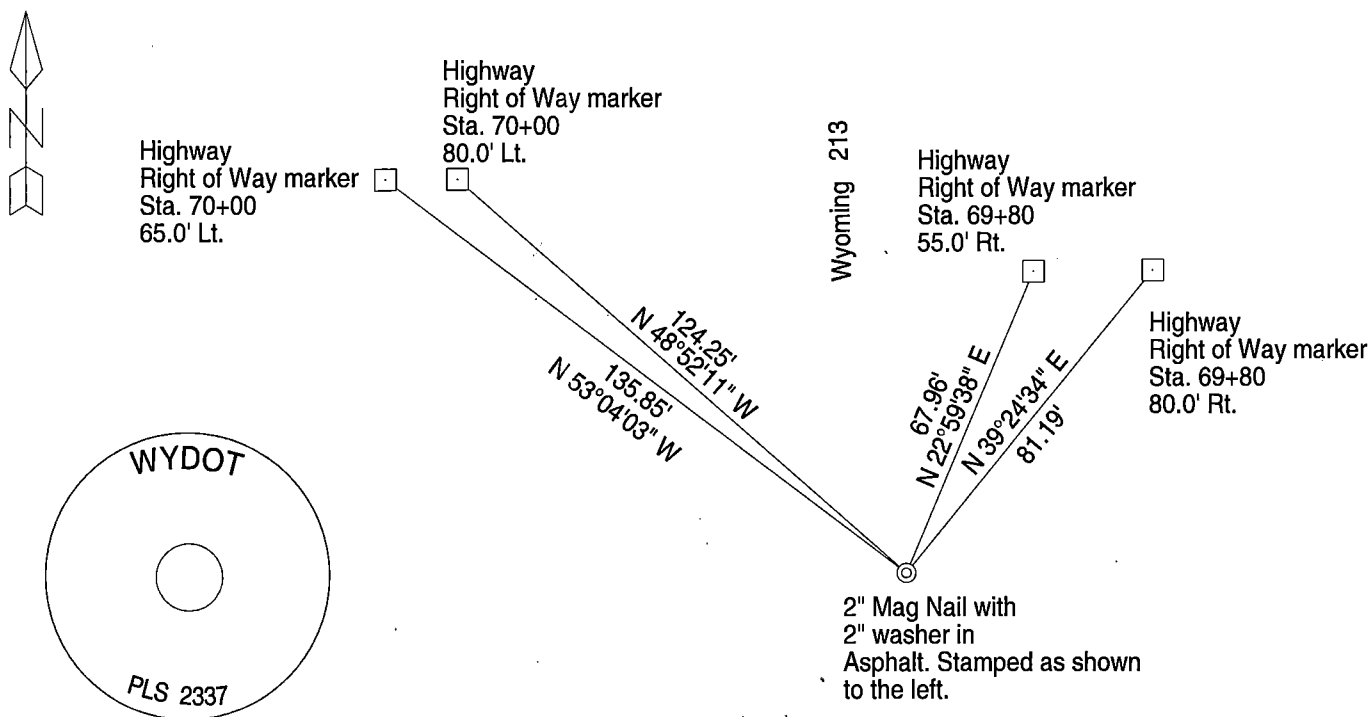
Reverse side of this form may be used if more space is needed.

Record of original survey and citation of source of historical information (if corner is lost or obliterated). Description of corner monumentation evidence found and/or monument and accessories established to perpetuate the location of this corner. Sketch of relative location of monument, accessories, and reference points with course and distance to adjacent corner(s) (if determined in this survey). Method and rationale for reestablishment of lost or obliterated corner.

GLO RECORD J. Wesley Hammond, U.S. Deputy Surveyor, September 4, 1871.
80.00 chains Set Sand Stone 22 x 10 x 8 for the corner to Sections 17, 18, 19 and 20.

FOUND 5/8" rebar 8" below surface of county gravel road. This rebar is at the intersection of the centerline of the county road and intersection of the centerline of the private road to the east. Distances were checked in the four directions to other PLSS corners and fit the known distances from other information. The rebar was accepted as the location of the section corner.

SET 2" Mag Nail with 2" washer stamped as shown. Point falls in the asphalt pavement of Highway 213. Four right of way markers were used for witness points for the section corner.



Date of Field Work: June 2017

Office Reference: Project 1102005

CROSS INDEX DIAGRAM

	1	2	3	4	5	6	7	8	9	10	11	12	13	14	15	16	17	18	19	20	21	22	23	24	25
A																									
B	+	+	+	+	+	+	+	+	+	+	+	+	+	+	+	+	+	+	+	+	+	+	+	+	+
C		6			5				4					3					2						1
D																									
E																									
F																									
G			7							8															
H																									
J																									
K																									
L																									
M																									
N																									
O																									
P																									
Q																									
R																									
S																									
T																									
U																									
V																									
W																									
X																									
Y																									
Z																									
	1	2	3	4	5	6	7	8	9	10	11	12	13	14	15	16	17	18	19	20	21	22	23	24	25

Land Surveyor/Firm/ Address
 David G. Hammond, PLS
 WYDOT
 3411 So. 3rd St.
 Laramie, Wyoming
 82070
 Telephone Number: 307-745-2135

This corner record was prepared by me or under my direction and supervision.

SEAL & SIGNATURE



RECP #: 715975
 RECORDED 9/15/2017 AT 3:02 PM BK# 2558 PG# 1536
 Debra K. Lee, CLERK OF LARAMIE COUNTY, WY PAGE 1 OF 1